



Kita Sinnes- wandel

Design baukind (www.baukind.de)

Design Team (Illustration) Atelier Perelà

Location Berlin, Germany

Built Area 700m²

Finish Floor : Carpet, Linoleum

Wall : Plaster Board

Ceiling : Acoustic Ceiling

Photographs Anne Deppe

Editor Kim Go-un

설계 바우킨드

설계팀 (삽화) 아틀리에 페렐

위치 독일 베를린

면적 700m²

마감 바닥 : 카펫, 리놀륨

벽체 : 석고 보드

천장 : 방음 천장

사진 앤 데피

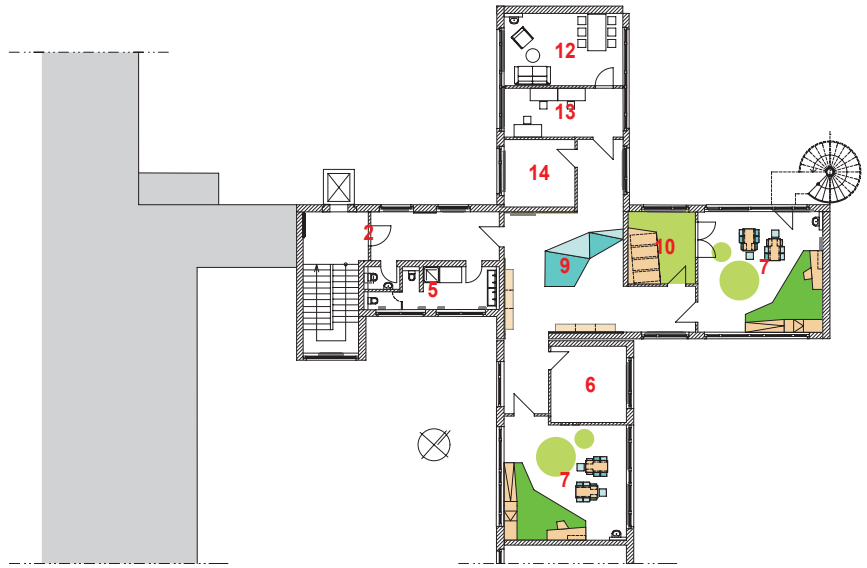
에디터 김고운



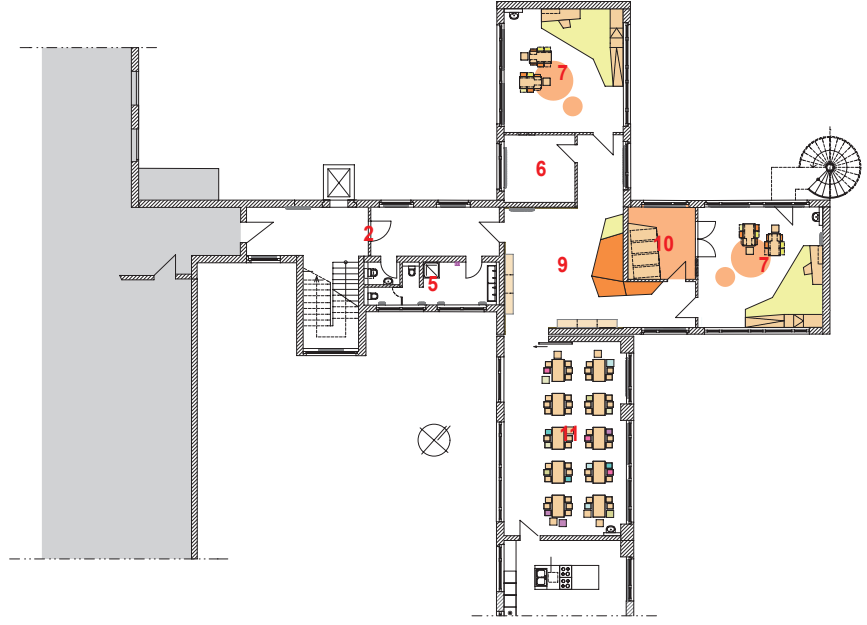
Classroom in 1F



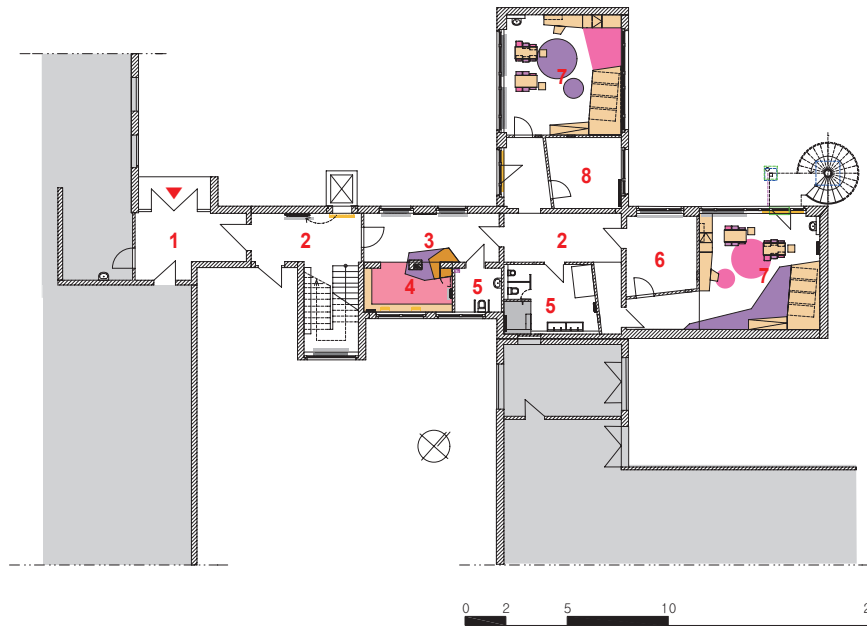
Stairs hall



3rd Floor plan



2nd Floor plan



1st Floor plan

- 1. Entrance
- 2. Corridor
- 3. Lounge
- 4. Locker
- 5. Toilet
- 6. Individual care room
- 7. Classroom
- 8. Sleeping room
- 9. Activity area
- 10. Rest room
- 11. Dining room
- 12. Director's room
- 13. Office
- 14. Conference room



Dining room in 2F



Activity area in 2F

The Kindergarten Sinneswandel in Berlin accommodates 65 deaf children. On three floors, wall size animal applications guide the kids to their rooms. A large part of the 700m² Helen Keller school in Charlottenburg was offered to the Sinneswandel gGmbH to bring to life their vision of an integration kindergarten. The challenge was to create an orientation guide for the building that is fun yet appropriate for children. Our desired outcome was to create rooms that children felt free to explore and discover and at the same time offer places of retreat and safety. A tree is the symbol for growth and development, this symbol was the inspiration for our design concept. The three floors represent the root, trunk and crown of a tree. For each floor, baukind, in cooperation with the Atelier Perelà developed an original color concept and animal characters that correspond to and live around the root, trunk and crown of a tree. The animals guide the children from the entrance door to their groups that are named after these animals: fox group, rabbit group, etc.

The ground floor is dedicated to the young kids between one and three years. The color concepts for this group are warm and earthy colors ranging from violet, brown to red shades, symbolizing the root of a tree. All furniture in this floor is appropriate for small children. The animals of this floor

are a worm and a rabbit, both animals that are found around the trunk area of a tree. Vibrant yellows and oranges transition into the first floor designated for the older kids above 3 years of age.

The furniture and room layout on this floor motivate kids to play, build and explore- without the need of toys! A fox and a deer guide the kids to their rooms; both animals represent the area of the tree trunk- still grounded but already stretching and growing in height. The children's restaurant accommodating 65 kids is located on the 1st floor. The Tables and stools are baukind products; they each come in different sizes. Tables and stools are not only used for the lunch hours but also function as building materials for endless ideas and combinations. In this way, the restaurant functions also as a place of recreation and activities.

The 2nd floor with its light and uplifting green and blue shades belongs to the oldest kids of the kindergarten. The 2nd floor portrays the crown of a tree with two typical animals: the owl and squirrel. Here kids are inspired to reach for the sky and unleash their fantasies. The squirrel platform with its removable upholstery encourages the kids to construct their own creative scenarios. As a sweet alternative, it can be used as soft resting place.



Wash area



Toilet



Activity area in 3F



Classroom in 3F

독일 베를린에 위치한 ‘키타 지네스반델(Kita Sinneswandel)’은 청각 장애 어린이들을 위한 유치원으로, 헬렌 켈러 학교의 공간 일부를 재현해 완성되었다.

이곳은 성장과 발달을 상징하는 나무를 콘셉트로 삼아 3개 층에 뿌리, 줄기, 꼭대기가 지닌 고유한 색상을 각각 적용했으며, 여기에 총마다 다양한 동물이미지를 더해 흥미로운 공간을 연출하고 있다. 뿌리를 의미하는 1층은 1~3살의 아이들이 사용하는 공간으로 보라색, 갈색 등 채도가 낮은 색상으로 흙이 지닌 따뜻한 분위기를 담아냈다. 여기에 벽면의 곳곳에는 원형 개구부를 만들어 언제 어디서든 아이들의 활동을 지켜볼 수 있도록 했다. 4~5살의 어린이들을 위한 2층은 밝은 노란색과 옐로우색으로 마감되었으며, 독특한 공간 배치로 아이들이 장난감 없이 놀고, 쌓고, 탐험할 수 있게 했다. 또한, 한 칸에 마련된 식사 공간에는 다기능 가구를 배치해 식사뿐만 아니라 창의적 활동을 위해 사용될 수 있어 효율성을 높이고 있다. 6세 이상의 아이들이 사용하는 3층은 녹색과 파란색 계열을 사용해 밝고 화사하게 꾸며졌으며, 각 층의 중앙 홀에는 폭신한 단상을 마련해 휴식을 취하거나 자유롭게 가구를 이동시키며 아이들이 적극적으로 활동을 할 수 있게 했다.

이곳은 체계적인 공간 계획 아래 다양한 형태의 가구와 소품을 더해 감각적인 어린이 공간을 선사한다.

